

## **TEIN Annual Conference**

# **Assessing impact across borders**





# **Institute for Transnational and Euregional Cross border Cooperation and Mobility / ITEM**

*Cross-border knowledge for policy and practice*



**Maastricht University / Provincie Limburg / Zuyd Hogeschool /  
NEIMED / Gemeente Maastricht /Euregio Maas-Rijn (EMR)**

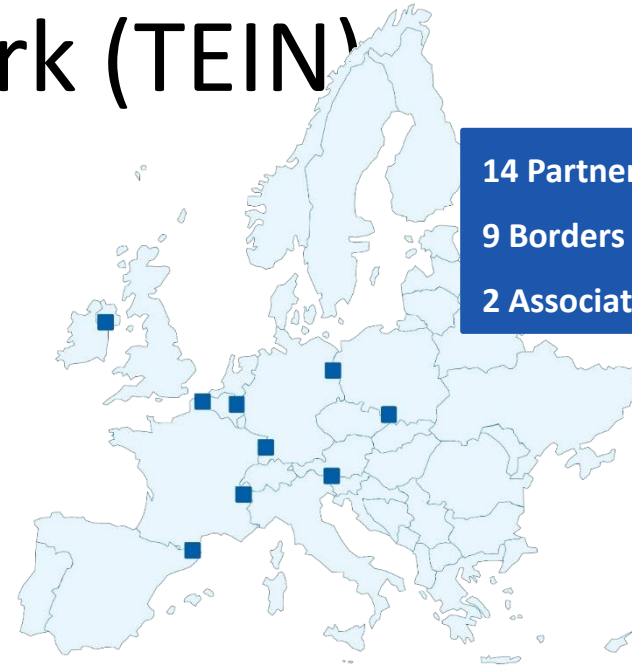
# Transfrontier Euro-Institut Network (TEIN)

Network of excellence in cross-border training, research and support services throughout Europe

## TEIN aims at

- facilitating CBC
- providing practical solutions
- building capacities in CB contexts
- strengthening EU Integration

» [www.transfrontier.eu](http://www.transfrontier.eu)



14 Partners

9 Borders

2 Associated members



# Objectives

**TEIN's objective is to build capacity in cross-border and transfrontier contexts**

- Exchange best practices
- Develop training and research
- Capitalize on learning from the different regional initiatives
- Work on new products such as transferable training modules, methods or tools.
- Produce relevant research to be disseminated to actors involved in transfrontier cooperation
- Increase knowledge and awareness of cross-border issues (at local, regional, national and European level)

# Projects

- Toolkit for Intercultural/Cross-Border Project Management (pat-tein.eu) – *Leonardo Transfer of Innovation*
- Research Database
- TEIN Platform for CB Dialog - *INTERREG*
- TEIN4Citizens - Engaging civil society in cross-border regions for the future of Europe – *Europe for Citizens*
- Critical Dictionary on Borders and European Integration
- Conferences: Castle Talks “Conflicts and cooperation at EU Borders” & “European Crisis and Border Regions” – Jean Monnet Projects

# Events, Publications, Participation to European Processes

- European Events in Brussels (2012), in Strasbourg (2014)
- EWRC Workshops (2014, 2017, 2019)
- Participation to the Cross-Border Review (2015-2016)
- The RECERC Journal (2017)
- Transdisciplinary discourses on CBC in Europe (2019)
- Annual conference 2019 : today!

# **“Effects on cross-border territories: The blind spot of regulatory impact assessment”**

Martin Unfried







© 2015 Mouson Océanographie / Transborderplan 2015





## Why legislative impact assessment?

- Most border barriers are a result of national and regional legislation and administrative practices
- Focus mainly seems to be on ex-post tackling of barriers, not on ex-ante
- Ex-ante mapping of effects can best be done through a cross border impact assessment by and for the region.

Legislative impact assessment widely used for other checks:

- Economic cost-benefit assessment
- Environmental impact assessment
- Gender balance assessment



Tool	Application	Decision stage	Objective/focus
European Commission	Regulatory Impact Assessment	Assessment of a Commission proposal on policy strategy or legislation	Cost-benefit analysis, employment, European competition, sustainability, territorial dimension (as decided until now)
National government Netherlands	Discussion about the cross-border impact assessment prior to national/EU legislation/policy	National ex ante component of the proposal by line ministries	Coordination on national policy/border situation, Coordination on transposing EU law into neighbouring countries
ESPON Quickscan TIA Territorial Impact Assessment	Tequila, Quick Check, EATIA Assessment of territorial effects of EU legislation	Ex ante (ex post)	Improvement of impact assessments by the European Commission
EURO Institut/Center for Cross Border Studies, Impact Assessment Toolkit for cross-border cooperation	Assessment of cross-border projects/policy	Ex ante	Improvement of projects and programmes
Territorial Impact assessment CBC Programmes  i.e.. Prof. Medeiros	Assessment the territorial effects of Programmes	Ex ante and ex post	Improved CBC Programmes

# ITEM legislative Impact Assessment

The **aim** is to provide a contribution to:

- the ex ante recognition of potential negative or positive cross-border effects of planned legislation or policy initiatives, and
- the ex post identification of negative or positive cross-border effects of existing policy or legislation.

To **be used**:

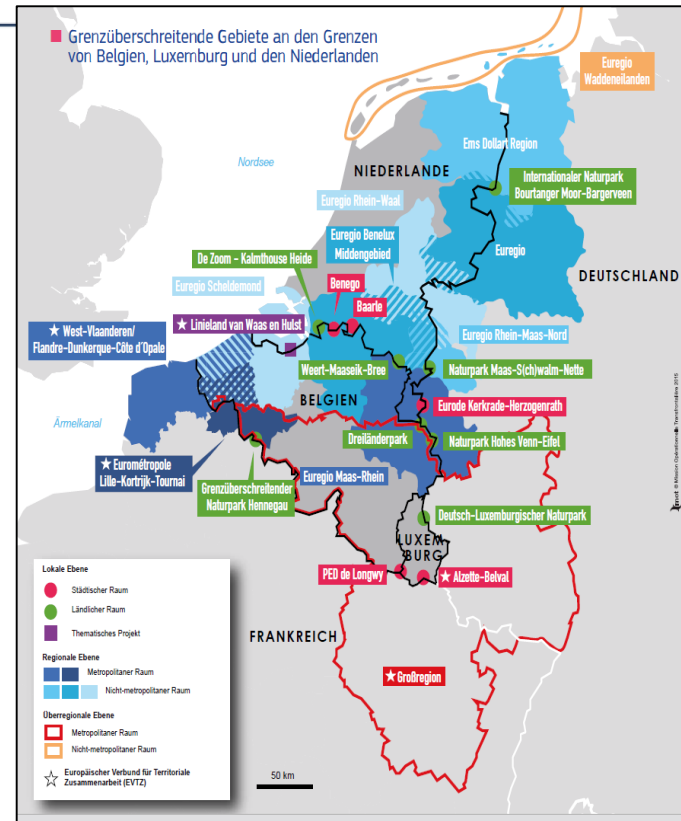
- To offer additional insights into national and EU initiatives.
- As a valuable tool and resource for the policymakers behind the decisions concerning border regions.



# ITEM cross-border impact assessment 2017

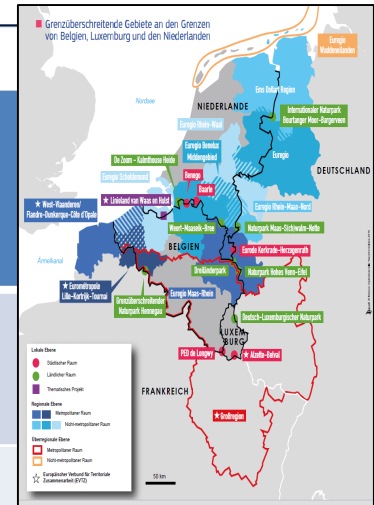
## Dossiers

1. The German toll
2. Tax Treaty Netherlands-Germany
3. Coordination Regulation Social security
4. Belgian passenger name records regulation



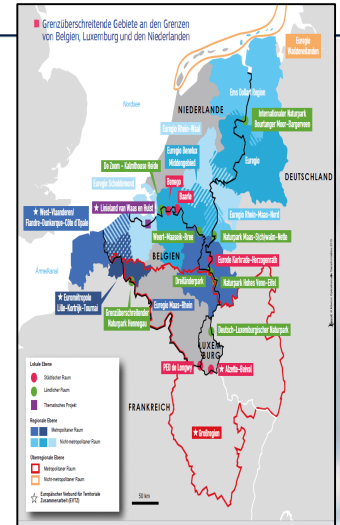
## Dossiers 2018 Examples

1. Increase VAT of certain products (NL)
2. German Benefits for House owners/cross-border workers
3. Pension age, legislation NL/BE/DE
4. Cannabis Pilot in NL



## Dossiers 2019

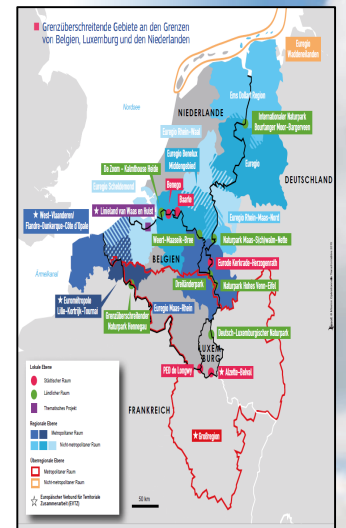
1. 90% Rule Tax rules in NL for cross-border workers
2. European Cross-border Mechanism – potential impact on specific border-regions
3. Nitrates Directive and manure quotas NL/DE
4. Cross-border data – effects of present Data (NL/DE/BE)
6. Governance and INTERREG: 15% provision
7. Law on the standardisation of the legal status of civil servants NL



## ITEM's cross-border impact assessment

## Three impact themes:

- the cross-border impact from the perspective of individuals, associations, and enterprises correlated with the objectives and principles of European Integration (freedoms, citizenship, and non-discrimination);
- the cross-border impact on socioeconomic development/sustainable development;
- the cross-border impact on Euregional cohesion and cross-border governance structures (cooperation with governmental agencies, private citizens, the business sector, etc.).





Goals/principles	Good practice/benchmark	Indicators
<b>European integration, European citizenship, Non-discrimination</b>	No border controls, open labour market, easy recognition of diplomas, good coordination of social security facilities, taxes	Number of border controls, cross-border commuting, duration and cost of recognition of diplomas, access to housing market, etc.
<b>Regional competitive strength, Sustainable development of border regions</b>	Cross-border initiatives for establishing companies, Euregional labour market strategy, cross-border spatial planning	Euregional: GDP, unemployment, quality of cross-border cluster, environmental impact (emissions), poverty
<b>Cross-border cooperation/Good Governance, Euregional cohesion</b>	Functioning of cross-border services, cooperation with organizations, coordination procedures, associations	The number of cross-border institutions, the quality of cooperation (in comparison to the past), development of Euregional governance structures, quantity and quality of cross-border projects

[martin.unfried@maastrichtuniversity.nl](mailto:martin.unfried@maastrichtuniversity.nl)

[www.maastrichtuniversity.nl/item](http://www.maastrichtuniversity.nl/item)

[Itemcrossborderportal.maastrichtuniversity.nl](http://itemcrossborderportal.maastrichtuniversity.nl)

E-mail: [Item@maastrichtuniversity.nl](mailto:Item@maastrichtuniversity.nl)

Address: Bouillonstraat 1-3 | 6211 LH  
Maastricht, The Netherlands

